

Einfach Tonleitern

Christian Roßmeißl

C-Dur

Two staves of musical notation for the C major scale. The first staff shows the scale in 4/4 time, starting with a C4 quarter note and ending with a C5 half note. The second staff shows the scale in 3/4 time, starting with a C4 quarter note and ending with a C5 half note. The third staff shows the scale in 4/4 time, starting with a C4 quarter note and ending with a C5 half note.

G-Dur

Two staves of musical notation for the G major scale. The first staff shows the scale in 4/4 time, starting with a G4 quarter note and ending with a G5 half note. The second staff shows the scale in 3/4 time, starting with a G4 quarter note and ending with a G5 half note. The third staff shows the scale in 4/4 time, starting with a G4 quarter note and ending with a G5 half note.

F-Dur

Two staves of musical notation for the F major scale. The first staff shows the scale in 4/4 time, starting with an F4 quarter note and ending with an F5 half note. The second staff shows the scale in 3/4 time, starting with an F4 quarter note and ending with an F5 half note. The third staff shows the scale in 4/4 time, starting with an F4 quarter note and ending with an F5 half note.

A-Dur

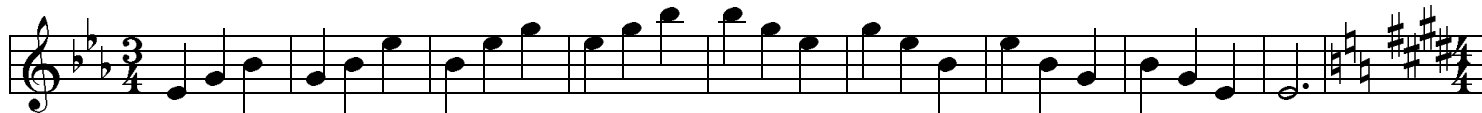
Two staves of musical notation for the A major scale. The first staff shows the scale in 4/4 time, starting with an A4 quarter note and ending with an A5 half note. The second staff shows the scale in 3/4 time, starting with an A4 quarter note and ending with an A5 half note. The third staff shows the scale in 4/4 time, starting with an A4 quarter note and ending with an A5 half note.

D-Dur

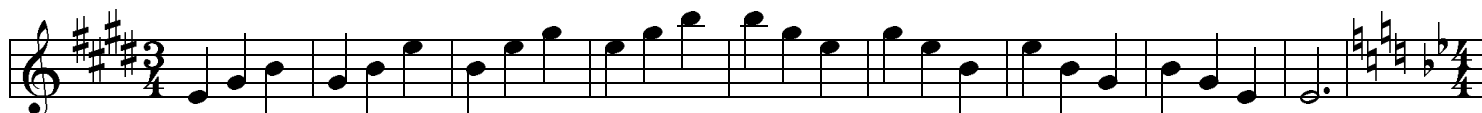
Two staves of musical notation for the D major scale. The first staff shows the scale in 4/4 time, starting with a D4 quarter note and ending with a D5 half note. The second staff shows the scale in 3/4 time, starting with a D4 quarter note and ending with a D5 half note. The third staff shows the scale in 4/4 time, starting with a D4 quarter note and ending with a D5 half note.



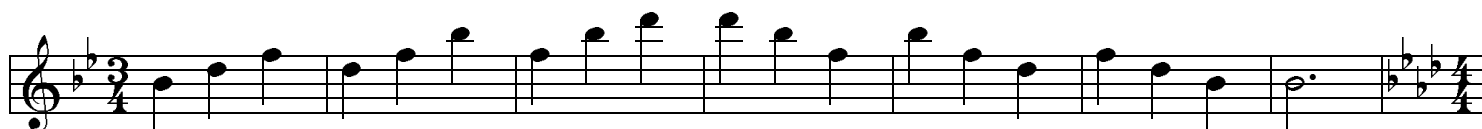
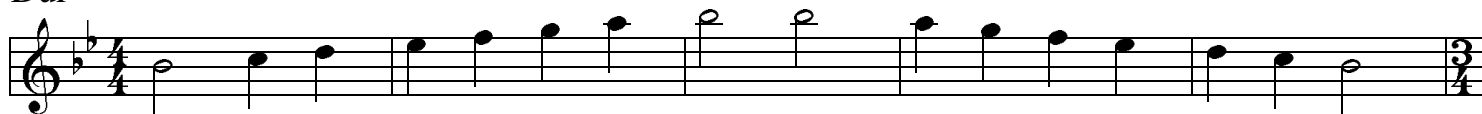
Es-Dur



E-Dur



B-Dur



As-Dur

