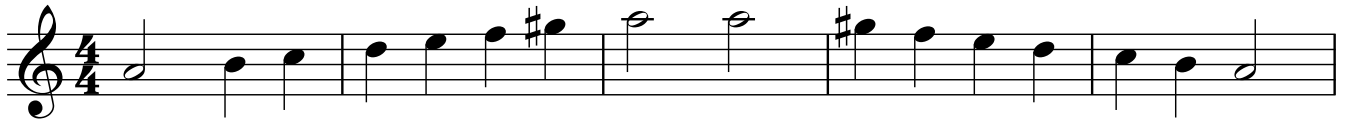


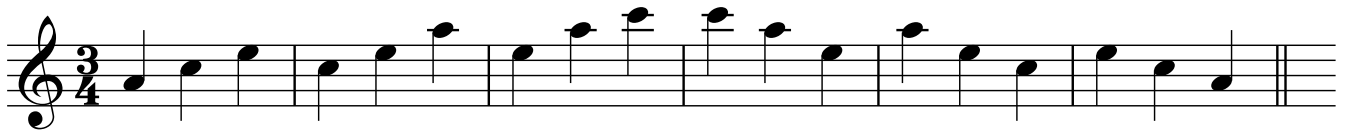
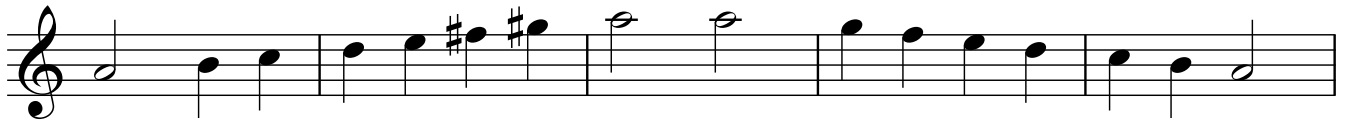
Einfache Molltonleitern

Christian Roßmeißl

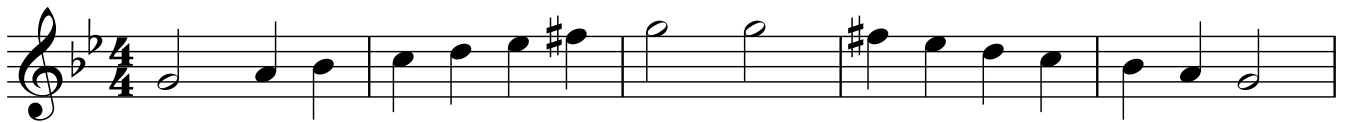
a-Moll harmonisch



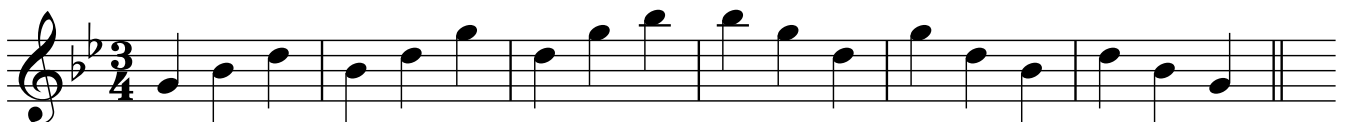
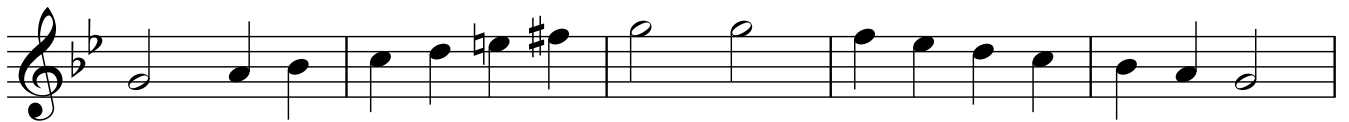
a-Moll melodisch



g-Moll harmonisch



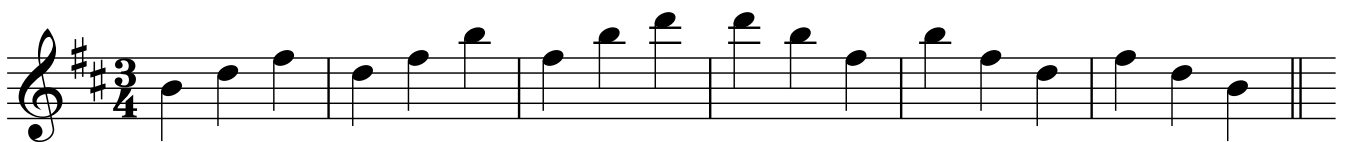
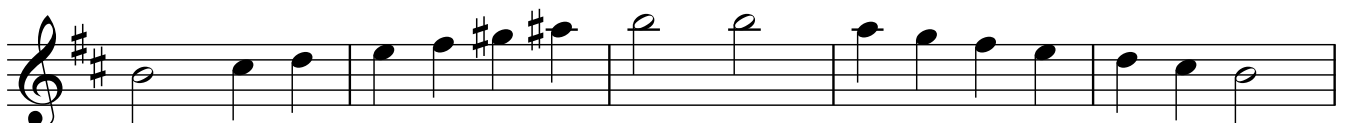
g-Moll melodisch



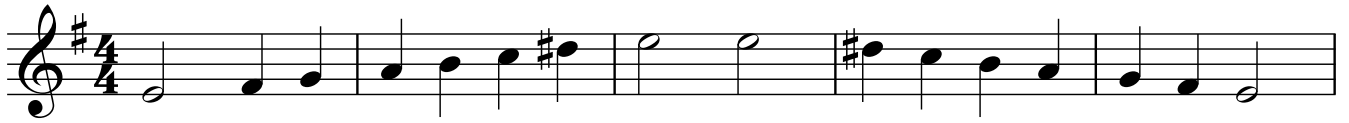
h-Moll harmonisch



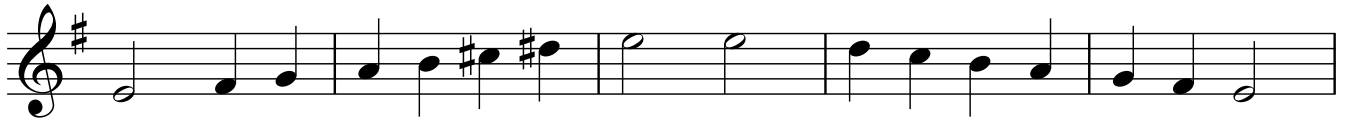
h-Moll melodisch



e-Moll harmonisch



e-Moll melodisch



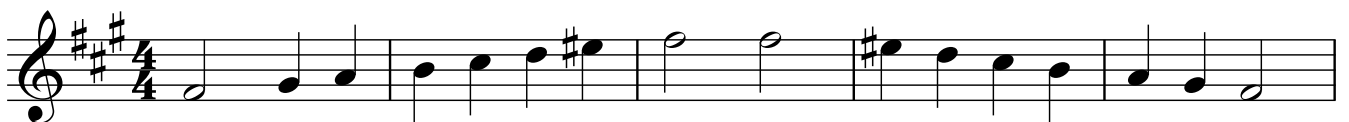
d-Moll harmonisch



d-Moll melodisch



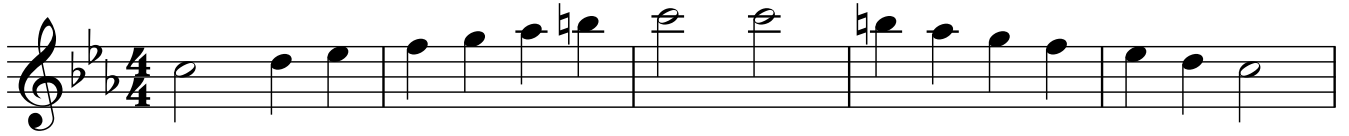
fis-Moll harmonisch



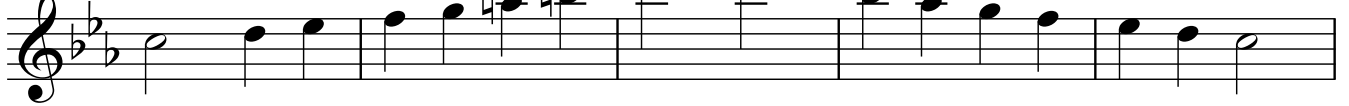
fis-Moll melodisch



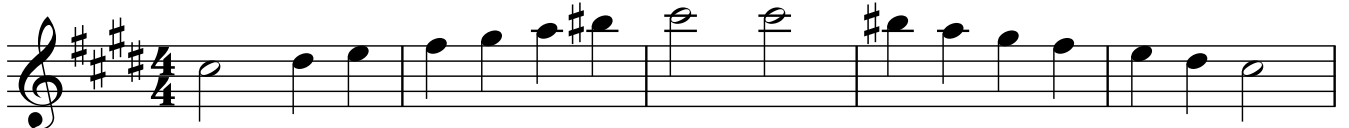
c-Moll harmonisch



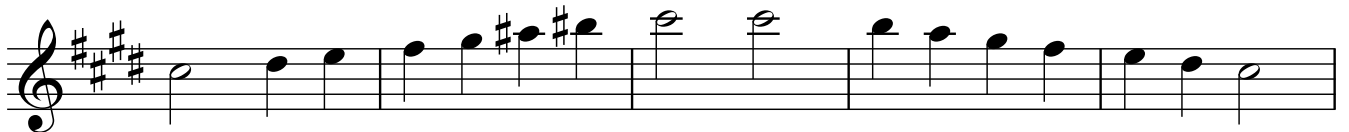
c-Moll melodisch



cis-Moll harmonisch



cis-Moll melodisch



f-Moll harmonisch



f-Moll melodisch

